



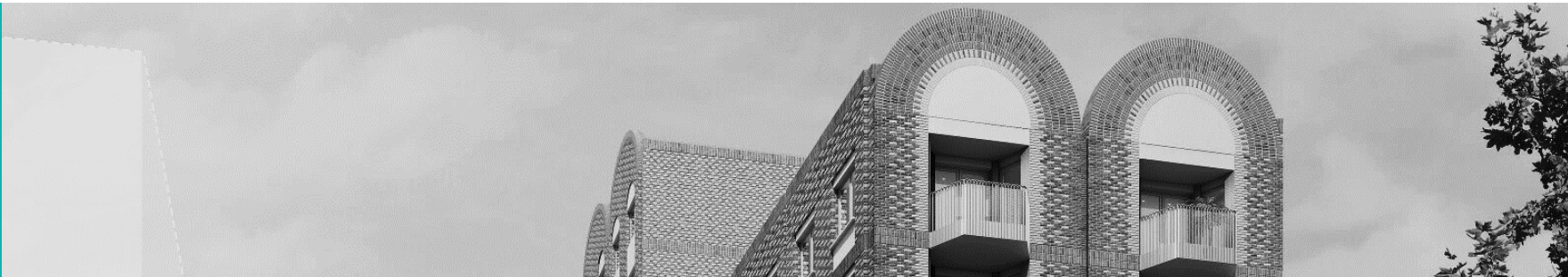
City of Westminster



THE ROYAL BOROUGH OF
KENSINGTON
AND CHELSEA



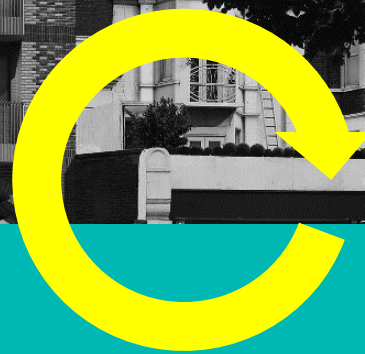
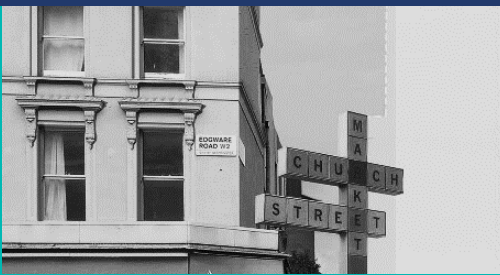
North West London
Integrated Care System



Bi-Borough Integrated Care Partnership (ICP) - update

Health and Wellbeing Board

October 2021

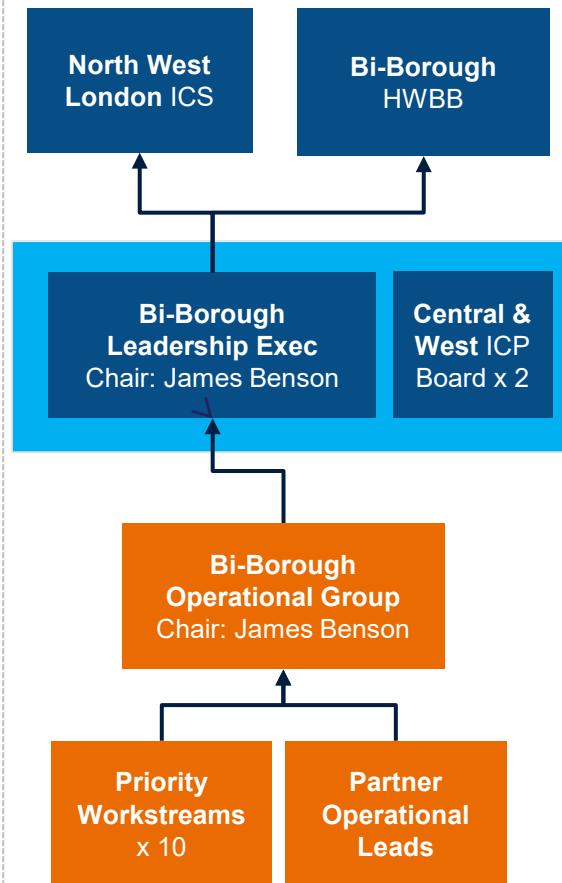


In early February 2021, the youngest ICP in NW London was born!

Who are we?

- **Bi-Borough ICP** – sometimes known as KCW partnership based on historical footprint
- Both Westminster and Kensington & Chelsea **share similarities that are unique to NW London** – stark ‘North & South’ divide, 2nd home residents, ‘day-time’ workers and tourists and homelessness populations, thriving business and 3rd sectors
- Our partnership is focused on addressing **‘system’ challenges** that cannot be resolved by individual partners – e.g. Obesity, Mental Health, CYP, Homelessness, etc.
- We are moving towards **community-led approach** – developing care and support models that are tailored and owned locally and within PCNs
- **Our partnership includes:** OneWestminster, K&C Social Council, Healthwatch, CLCH, CNWL, WCC & RBKC, Central & West GP Confeds, NWL CCG – supported by Central & West London Borough Teams

How are we structured?



Our short journey to date...

- The ‘case for change’ for **Bi-Borough working was immediately clear** – but not without it’s challenges!
- **What works well that can be scaled?** Quick & focused baseline assessment on integration best practices across both boroughs (e.g. *My Care My Way, Partnership in Practice, North Ken, etc*)
- Covid vaccination became #1 issue – **accelerating ICP relationship building and ‘ways of working’**
- In parallel, **Local priorities and ICP** was officially signed-off by HWBB
- **Delivery Governance** and **PMO** staffed by CCG, CLCH and CNWL were **established** to manage and deliver both local and NWL priorities
- Renewed **‘Social Contract’** agreed by all partners (including GPs!) to continue with our Bi-Borough arrangements
- **‘Staying Well this Winter’** – our first co-produced, communities-led and innovative system response

A communities-led, targeted and agile ICP approach can deliver real and tangible impact for individuals & families

Partnership work needs to continually deliver real & tangible benefits to allow us to manage the complexities of borough (x2) and ICS stakeholders



Being the youngest means we're able learn from past experiences and best practices within NWL and nationally